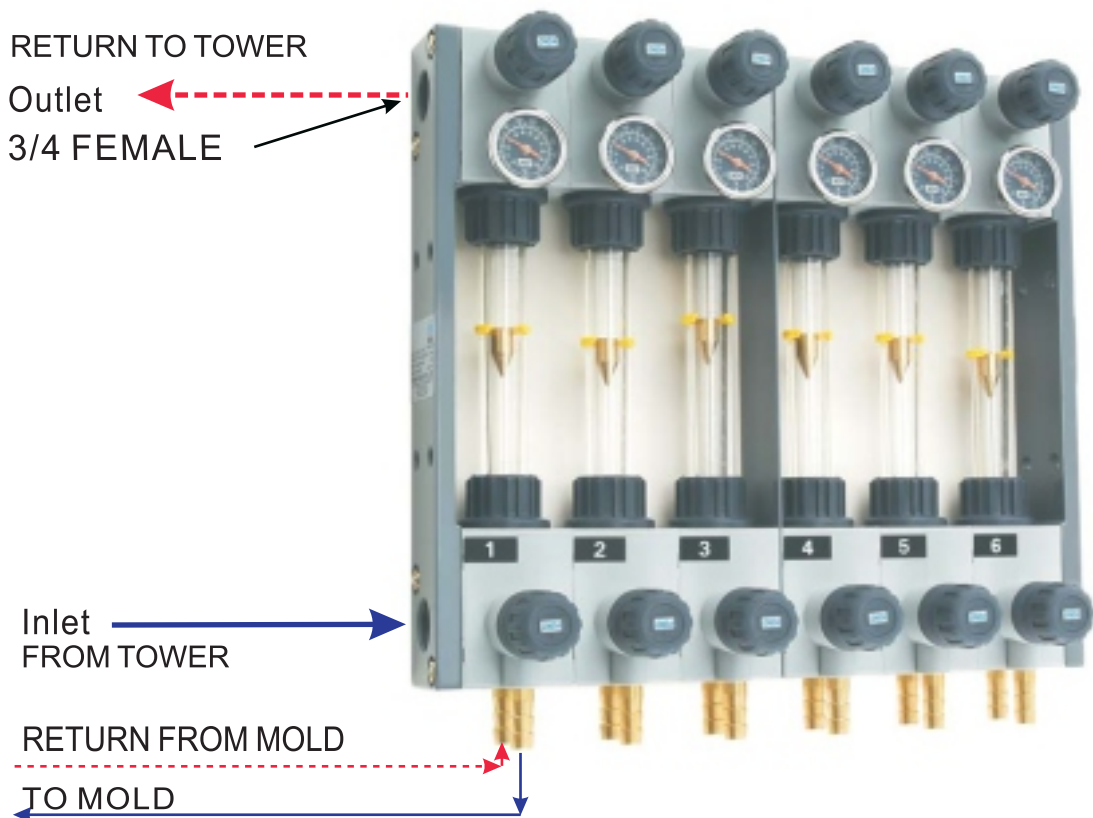


The FSM Water Flow Regulator

INCREASED PRODUCTIVITY

NEVER BEFORE SO SIMPLE

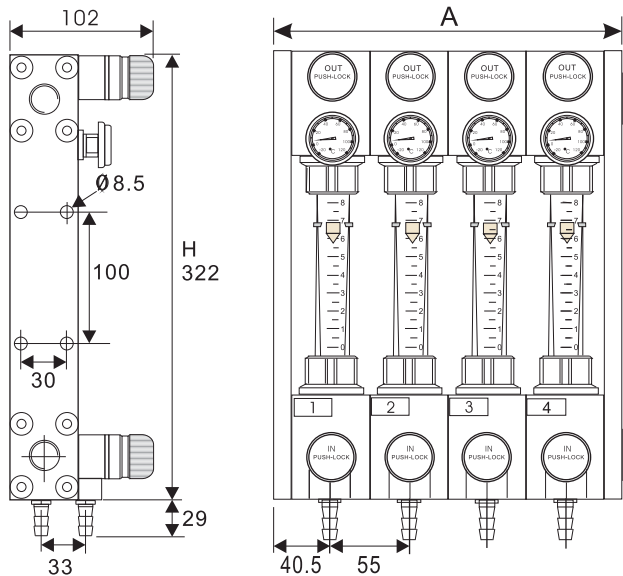
Easily and Quickly Mounted
Easily and Quickly Piped
Easily and Quickly Cleaned
Easily and Quickly Change Flow Rate



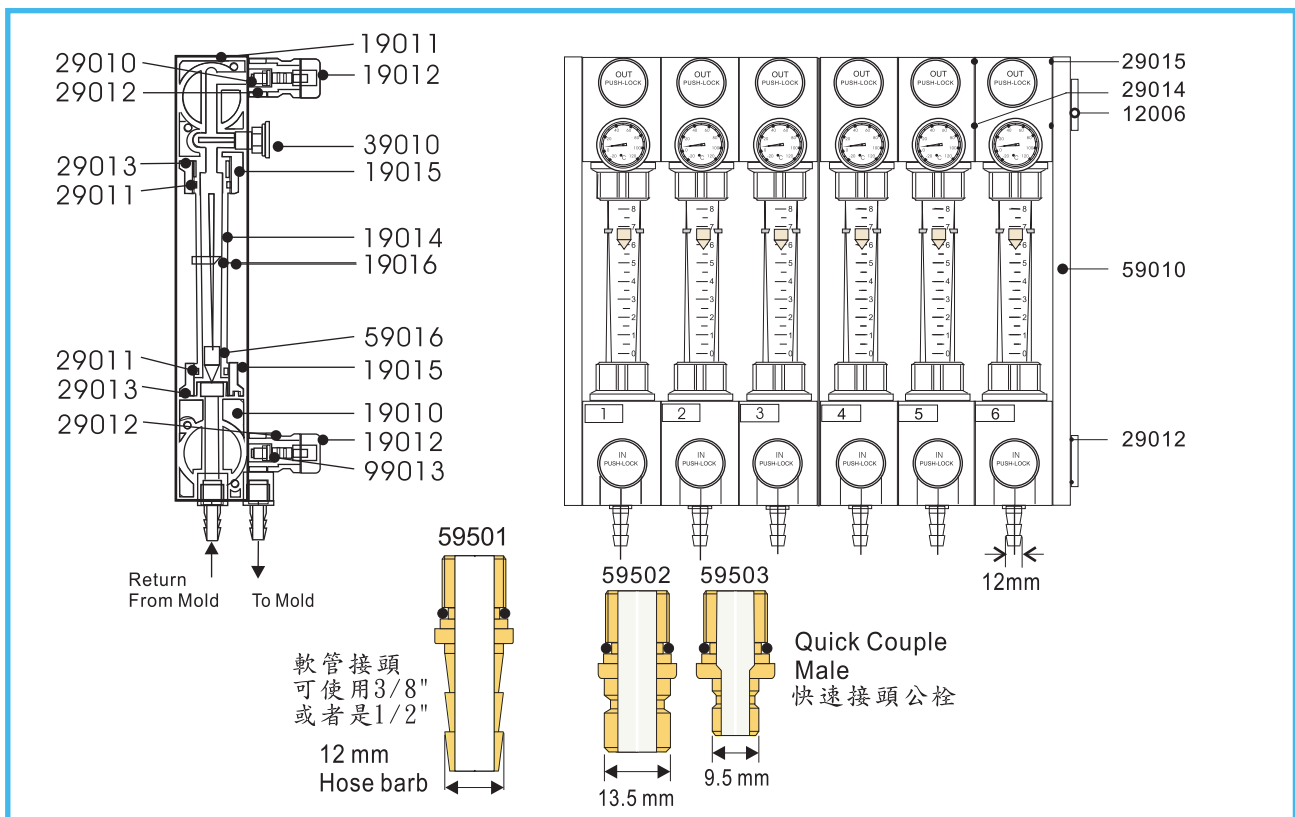
- * Improved quality of parts through precise water control,
- * Can be used with Ethylene & Propylene Glycol,
- * Quick and easy reproduce able settings when changing molds,
- * Heavy duty construction, long life,
- * Easy mounting on any make or model of machine,
- * Saves energy from faster startups,
- * Temp. gauge for each tube,
- * Flow tubes : Special polyamide nylon material (not polycarbonate) adjustable reference ring and contains brass float cone. Reference marks are molded-in, not printed on. Removes easily for cleaning

INSTALLATION INSTRUCTIONS FOR **FSM** WATER FLOW METER

Overall Size



Model	Overall Size		
	A Width (mm)	Depth (mm)	Height (mm)
FSM-200	130	105	351
FSM-300	185	105	351
FSM-400	245	105	351
FSM-500	302	105	351
FSM-600	358	105	351
FSM-800	468	105	351
FSM-900	525	105	351
FSM-1000	580	105	351
FSM-1200	690	105	351



Part Number.

Part No.	Description	Part No.	Description	Part No.	Description
19010	Lower Body	29010	O-Ring	59065	Float Cone
19011	Upper Body	29011	O-Ring	59080	Float Cone
19012	Hand Wheel	29012	O-Ring	59110	Float Cone
99013	Control Valve	29013	O-Ring	59130	Float Cone
19014	Flow Tube	29014	O-Ring	59024-2 To	Screw
19015	Flow Tube Nut	29015	O-Ring	59024-12	Screw
19016	Flow Indicator	39010	Thermometer	59050	Mid Plate
12006	Plug	59010	R.L.Side Plate	59061	Brush
59501	12 mm hose barb	59502	13.5mm Q.Couple	59503	9.5mm Q.Couple

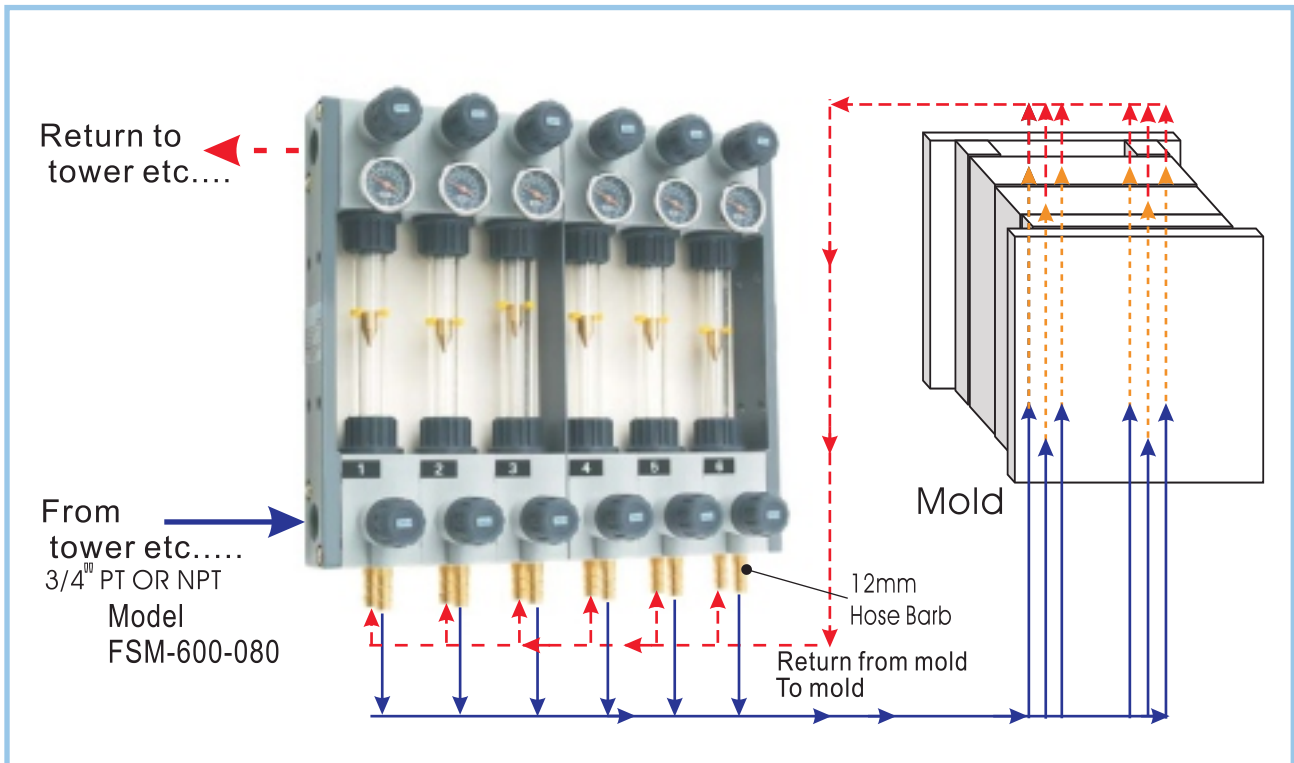
Invotec Water Flow Regulator (FSM)

www.invotecsolutions.co.uk - sales@invotecsolutions.co.uk



INSTALLATION INSTRUCTIONS FOR **FSM** WATER FLOW METER

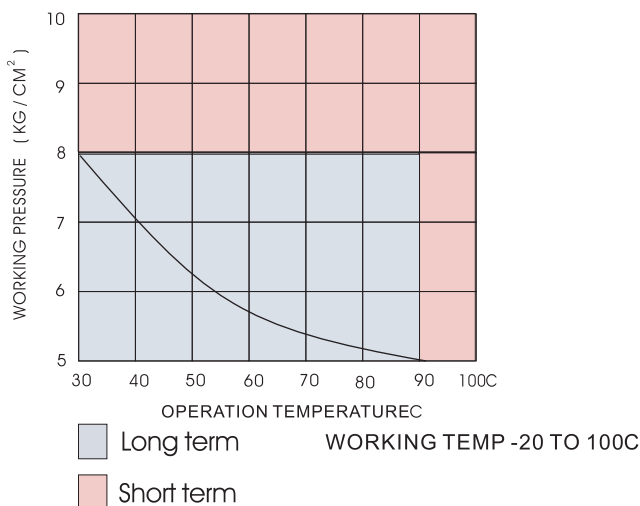
Piping



Standard Model *

FSM-200-065	* FSM-200-080	FSM-200-110	FSM-200-130
FSM-300-065	* FSM-300-080	FSM-300-110	FSM-300-130
FSM-400-065	* FSM-400-080	FSM-400-110	FSM-400-130
FSM-500-065	* FSM-500-080	FSM-500-110	FSM-500-130
FSM-600-065	* FSM-600-080	FSM-600-110	FSM-600-065
FSM-800-065	* FSM-800-080	FSM-800-110	FSM-800-130
FSM-900-065	* FSM-900-080	FSM-900-110	FSM-900-130
FSM-1000-065	* FSM-1000-080	FSM-1000-110	FSM-1000-130
FSM-1200-065	* FSM-1200-080	FSM-1200-110	FSM-1200-130

PRESSURE VS TEMPERATURE



FSM-400-080

- Flow per each zone 8 L/Min
- 4 zone per unit
- 12mm Hose barb
- Flow System Matic

FSM-800-110

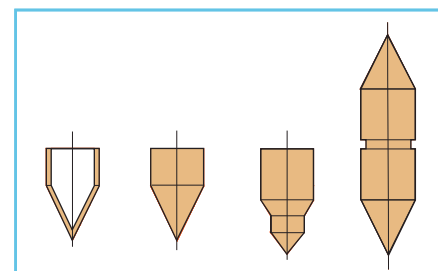
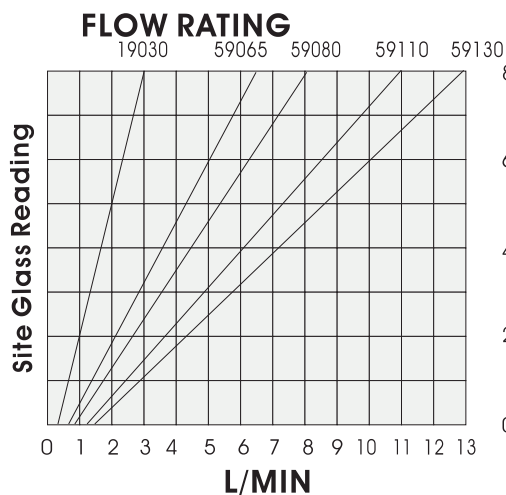
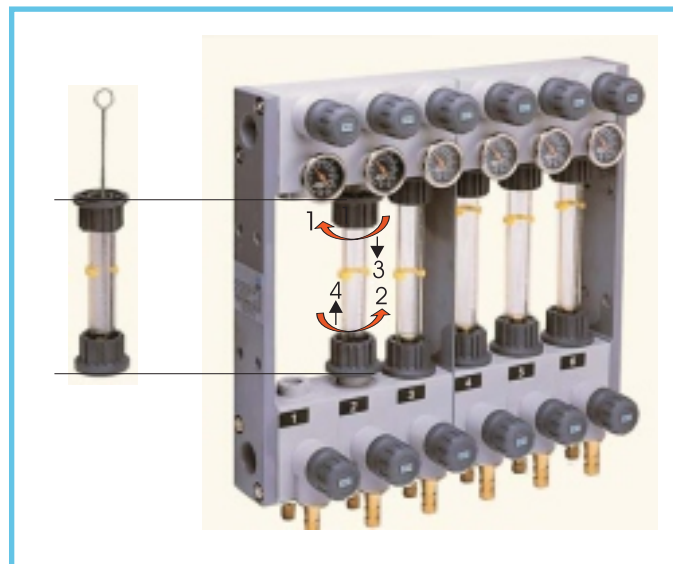
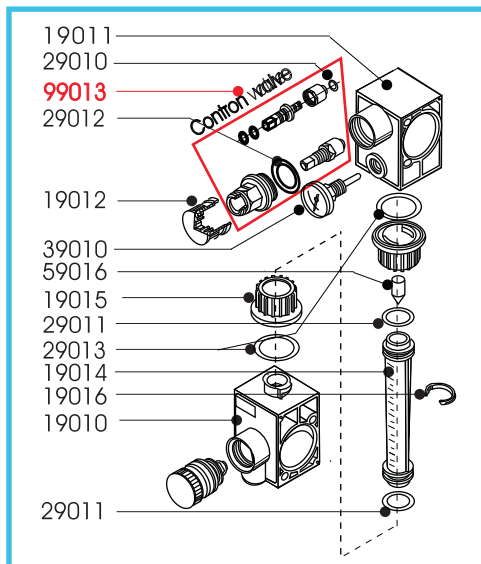
- Flow per each zone 11 L/Min
- 8 zone per unit
- 12mm Hose barb
- Flow System Matic

INSTALLATION INSTRUCTIONS FOR **FSM** WATER FLOW METER

BENEFITS OF THE MODEL **FSM** WATER FLOW METER WATER FLOW REGULATOR

- A. ONE SIZE DOES ALL 6.5, 8.0, 11.0, 13.0 L/MIN
- B. GLASS FILLED NYLON CONSTRUCTION, NO RUSTING OR CHEMICAL CORROSION
- C. EASILY CLEANING WITH REMOVE FLOW TUBE NUT & BRUSH CLEAN OUTSIDE
- D. NUMBERS OF ZONE CAN BE INCREASED OR REDUCED EASILY, REQUIRING NO SPECIAL TOOLS
- E. FLOW ZONE CONTROL KNOBS CAN BE LOCKED
- F. THERMOMETER IS STANDARD ON EACH ZONE
- G. FLOW INDICATOR IS STANDARD ON EACH ZONE
- H. TUBES ARE MADE FROM NYLON 12

Easy Cleaning



Flow Rating (L/min)	Material	Float Cone Part No.
3	Plastic	19030
6.5	Brass cone	59065
8		59080
11		59110
13		59130

NOTE :
ALL MODELS CAN USED
SAFELY WITH ETHYLENE &
PROPYLENE GLYCOL